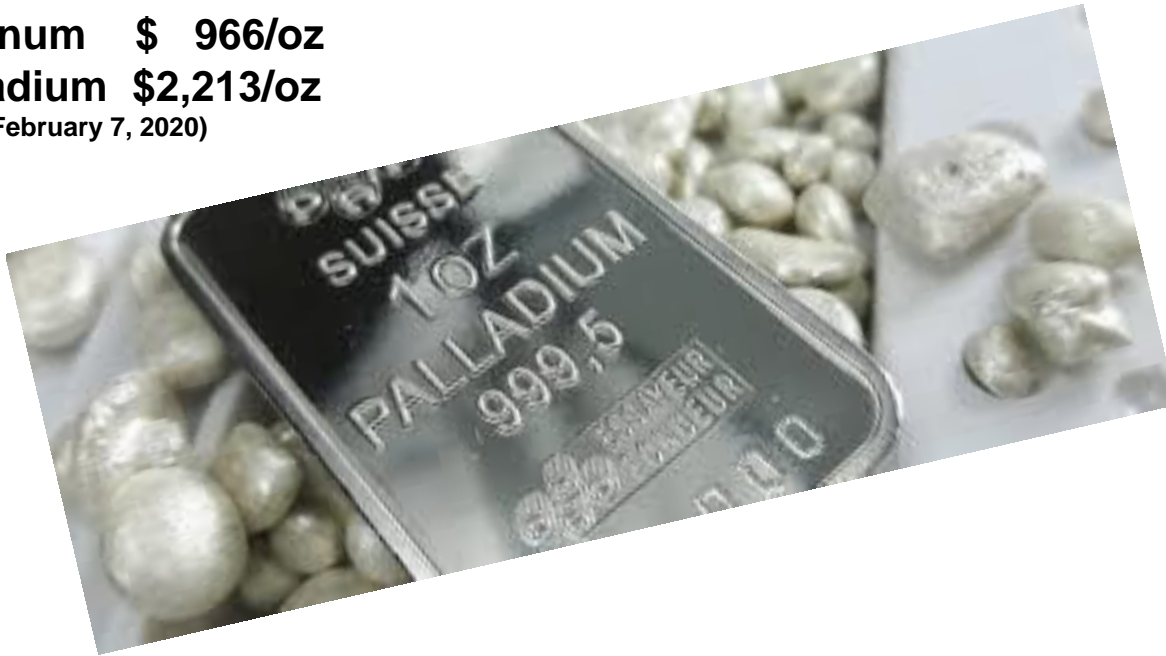


LOVE LAKE – Copper Nickel Palladium Project

Platinum \$ 966/oz

Palladium \$2,213/oz

(Kitco February 7, 2020)

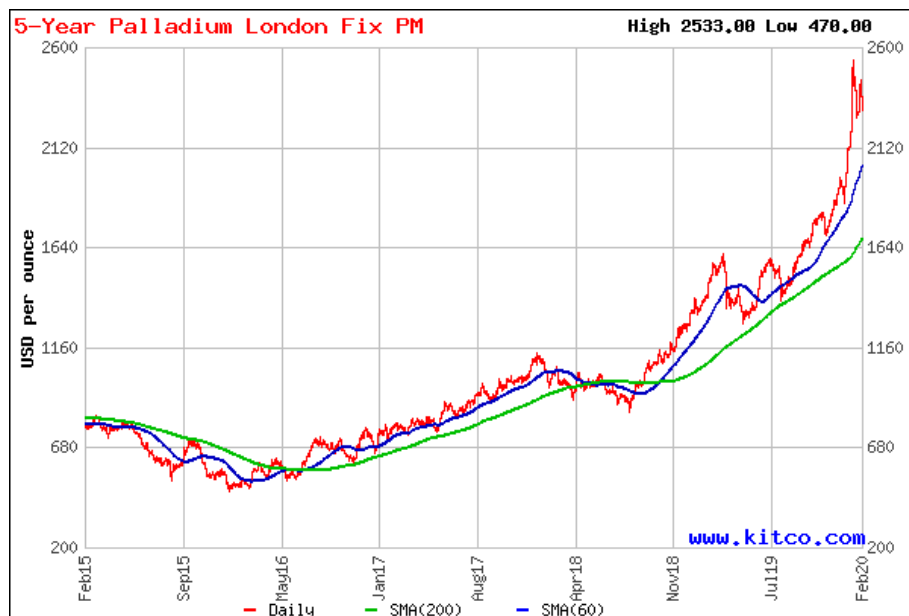


Exploring for Energy Metals in North America

February 10, 2020

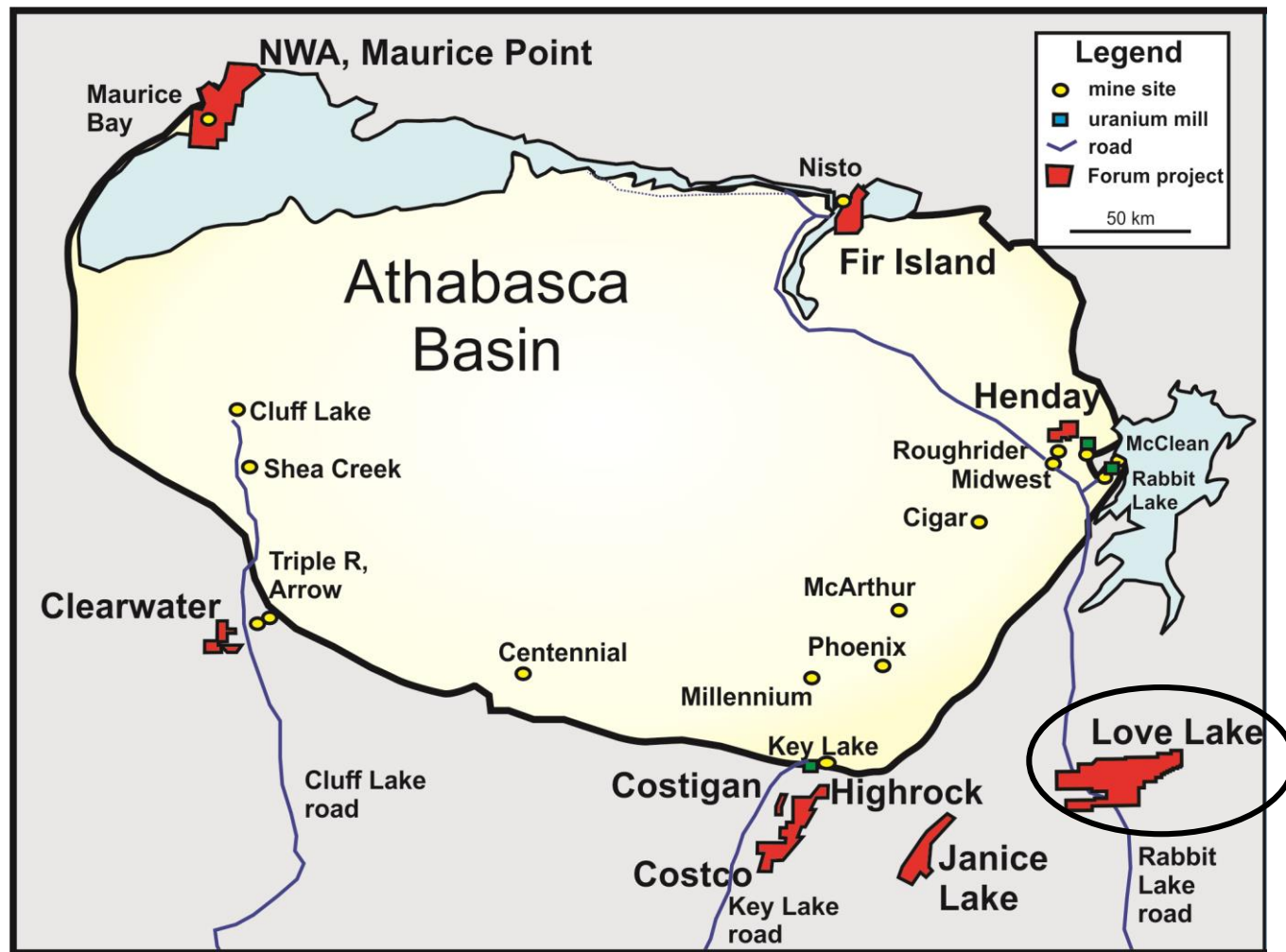
Palladium Market Fundamentals

- Heightened international emission standards driving catalytic converter demand;
- Nation wide (July 2020) emission legislation takes effect in China;
- Implats paid \$1 Billion Cash in 2019 for North American Palladium Lac des Iles



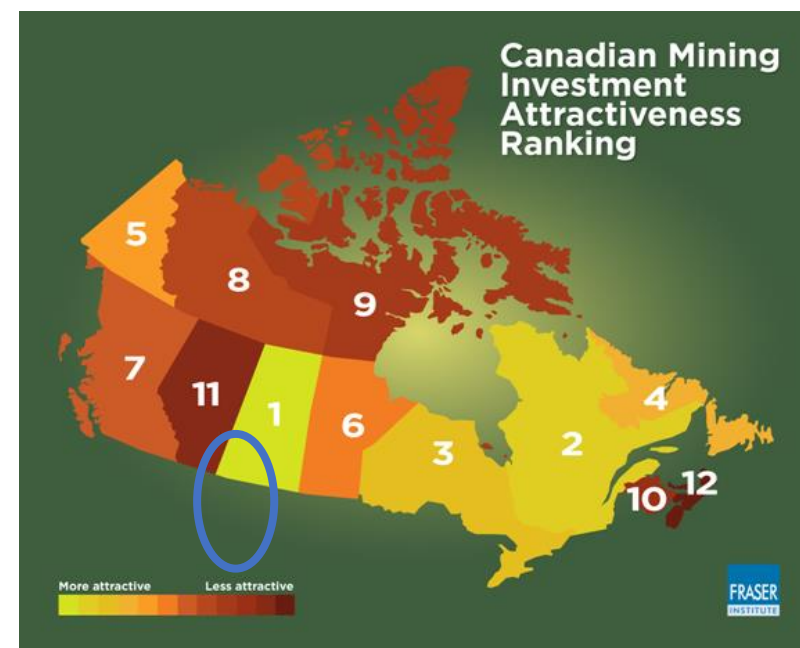
“I don’t think it’s a ticking time bomb. The market is in fundamental deficit and there are no real alternatives to substituting it in the short term.”

*Neal Froneman, CEO Sibanye-Stillwater
February 5, 2020*



Focus On Saskatchewan

**100% Owned Love Lake
Nickel/Copper/Palladium Project**



FORUM'S PALLADIUM VALUE PROPOSITION

- Second Largest Mafic/Ultramafic Complex in North America
- Palladium Enriched, but Historically Overlooked & Poorly Explored
- Forum Adjusting Exploration Techniques/Models Under the Direction of renowned PGE expert Dr. Larry Hulbert



Saskatchewan-focused Explorer

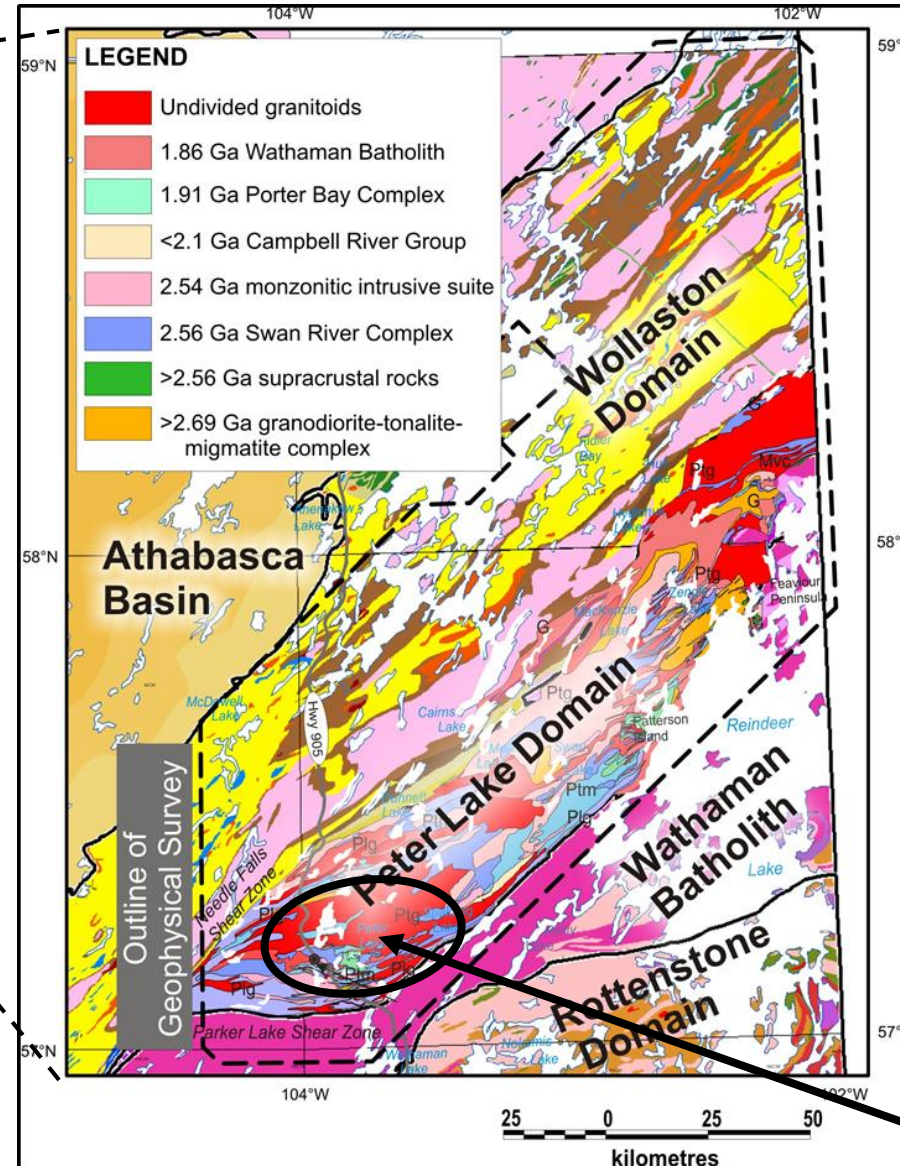
2020 LOVE LAKE EXPLORATION BUDGET

• High Resolution Airborne Magnetic Survey (Spring)	\$200,000
• Geological Mapping and Sampling (Summer)	\$200,000
• Ground Geophysics (Fall)	<u>\$100,000</u>
TOTAL	\$500,000
 Contingency - Drilling in Fall 2020 or Winter 2021	 \$1,000,000

LOVE LAKE PROJECT SUMMARY



Project Location

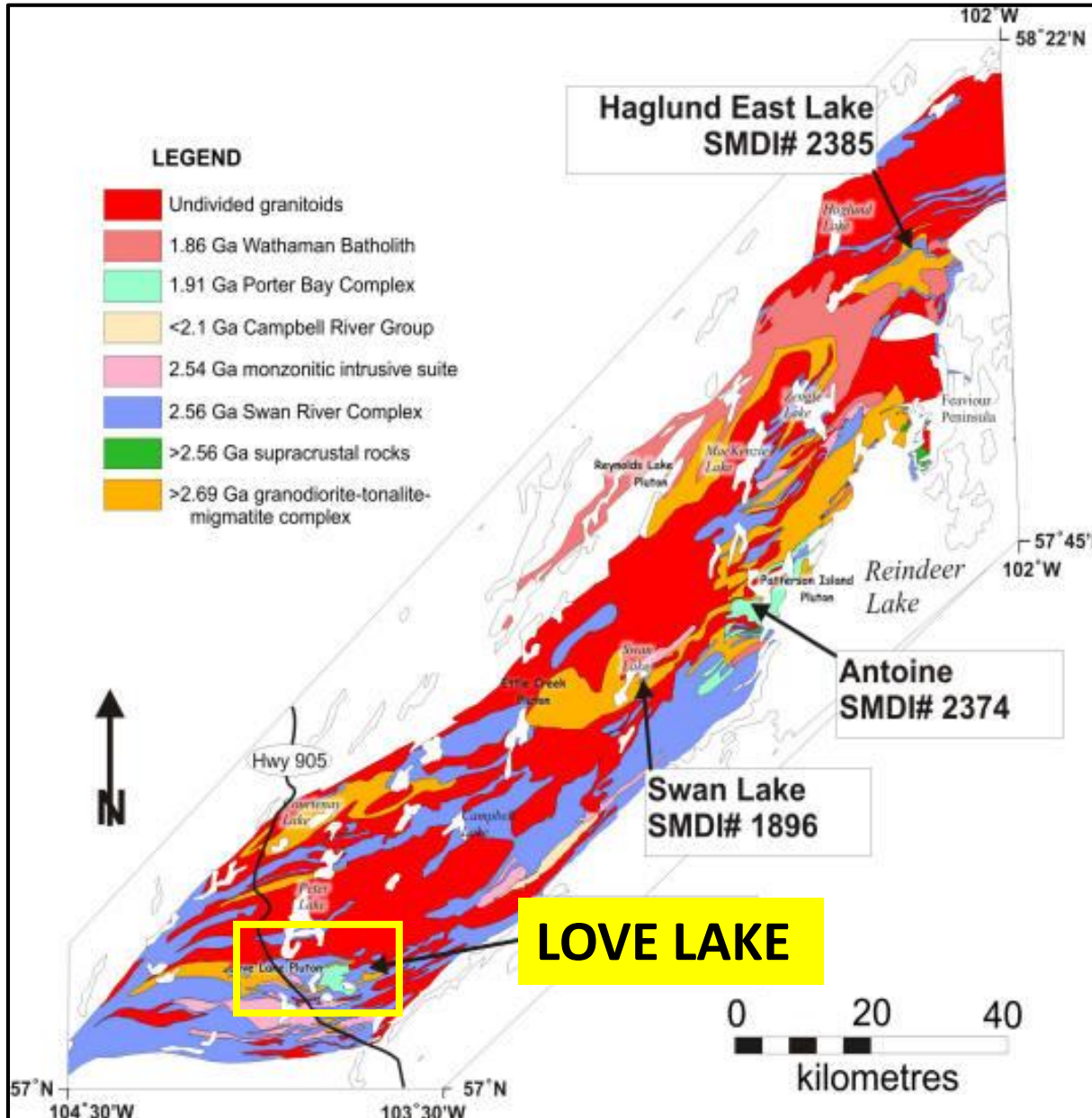


Located in northern Saskatchewan; accessible from Rabbit Lake mine site road.

Intermittent exploration since 1985 has discovered showings of anomalous nickel, copper and platinum group element values.

The Peter Lake Domain is approximately 2.5 billion years old, similar to the rocks hosting the Lac des Iles PGE deposit.

Love Lake project

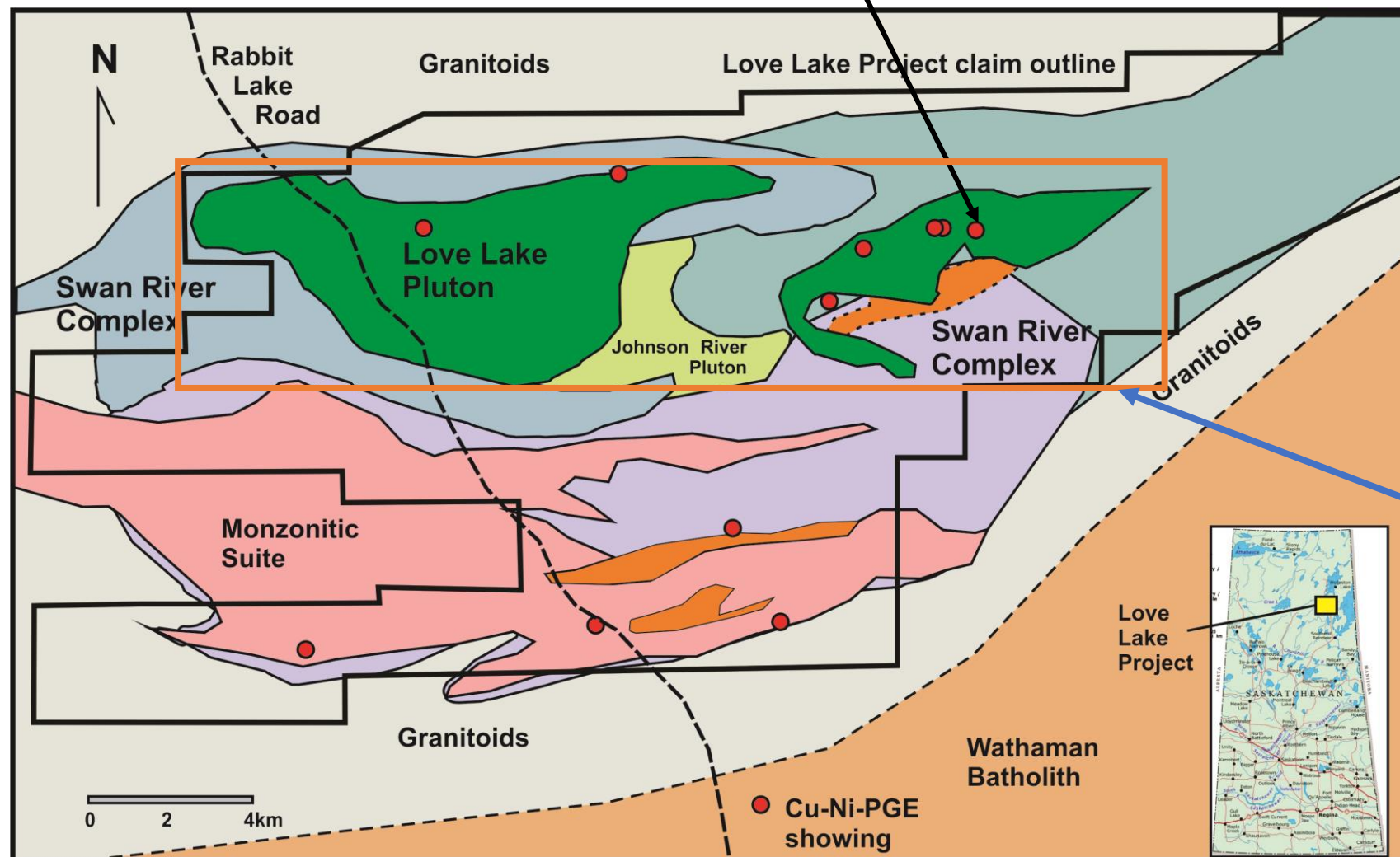


“The Swan River (a.k.a Peter Lake) Complex is the second largest layered mafic/ultramafic complex in North America with the Duluth Complex in Minnesota being the largest”.

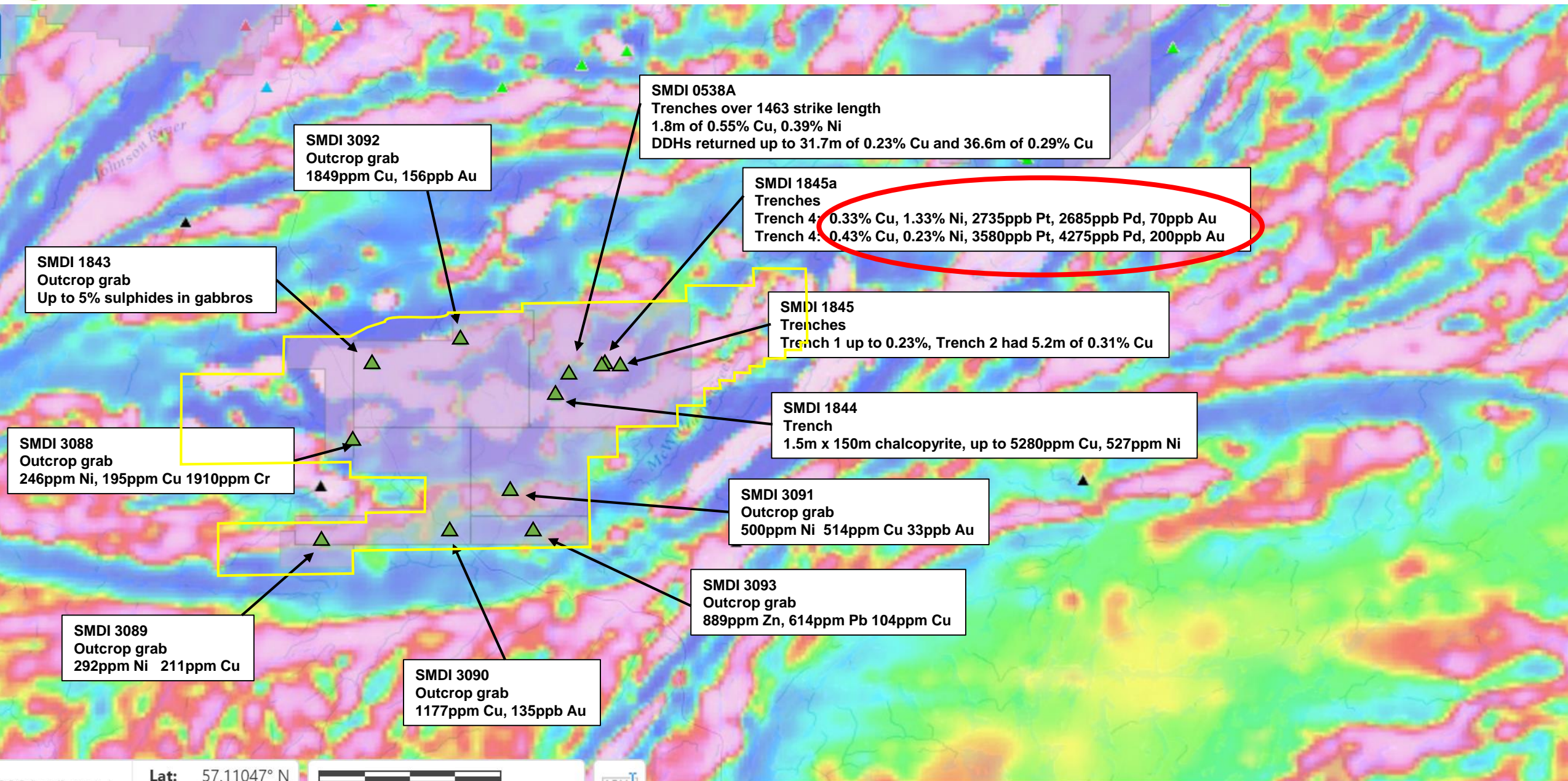
*Dr. Larry Hulbert, 1988
Geological Survey of Canada*

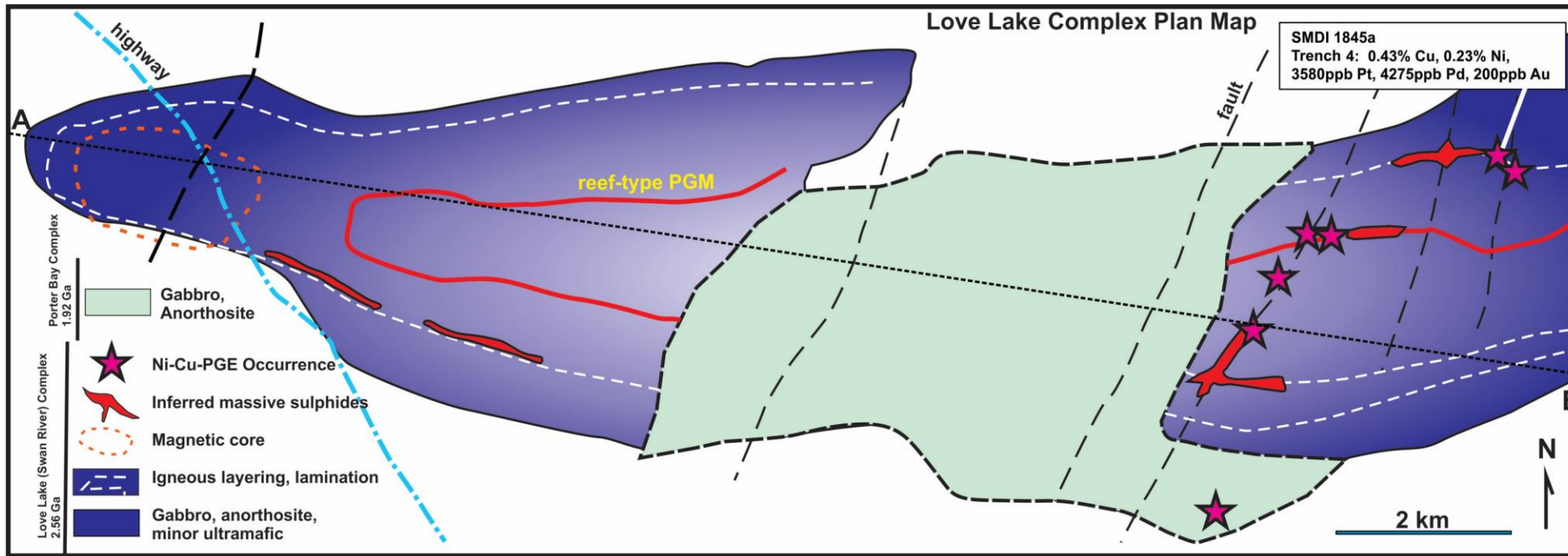
Forum’s Copper/ Nickel/ Palladium Team
 Larry Hulbert, P.Geo., D.Sc.
 Jim Atkinson, P.Geo., M.Sc.
 Ken Wheatley, P.Geo., M.Sc.

Sample #	Trench #	Sample (WHAT LAKE)	% Cu	% Ni	PPB Pt	PPB Pd	PPB Au
PL20-114	4	grab	0.33	1.33	2735	2685	70
PL20-115	4	grab	0.43	0.23	3580	4275	200



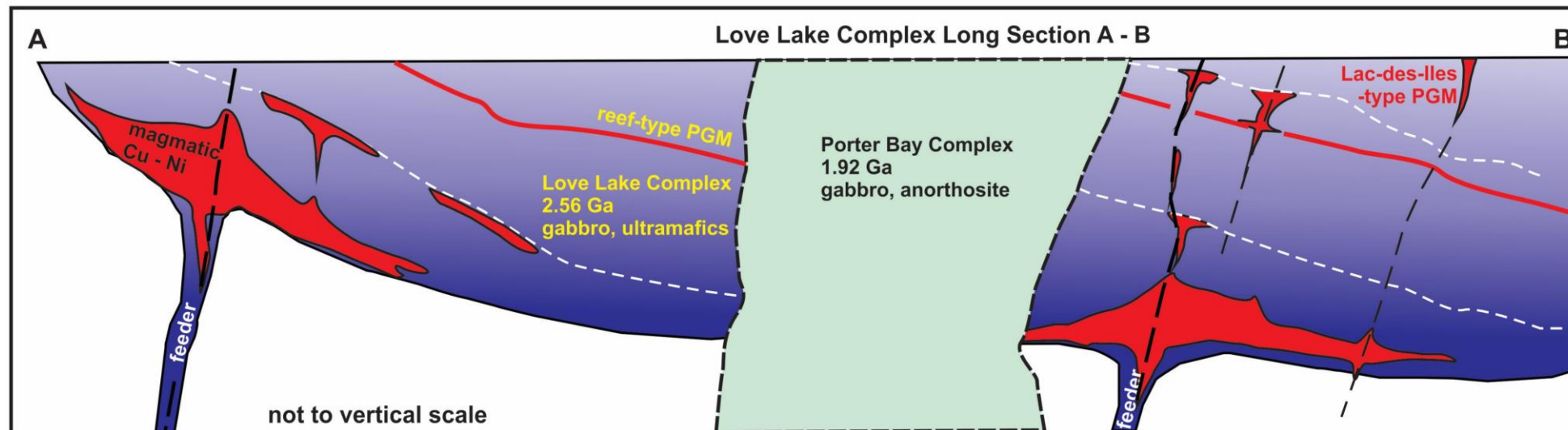
- Forum staked 30,834 ha, covering all known showings in the area within the prospective Swan River Mafic-Ultramafic Complex
- Good Infrastructure; Highway access to the property

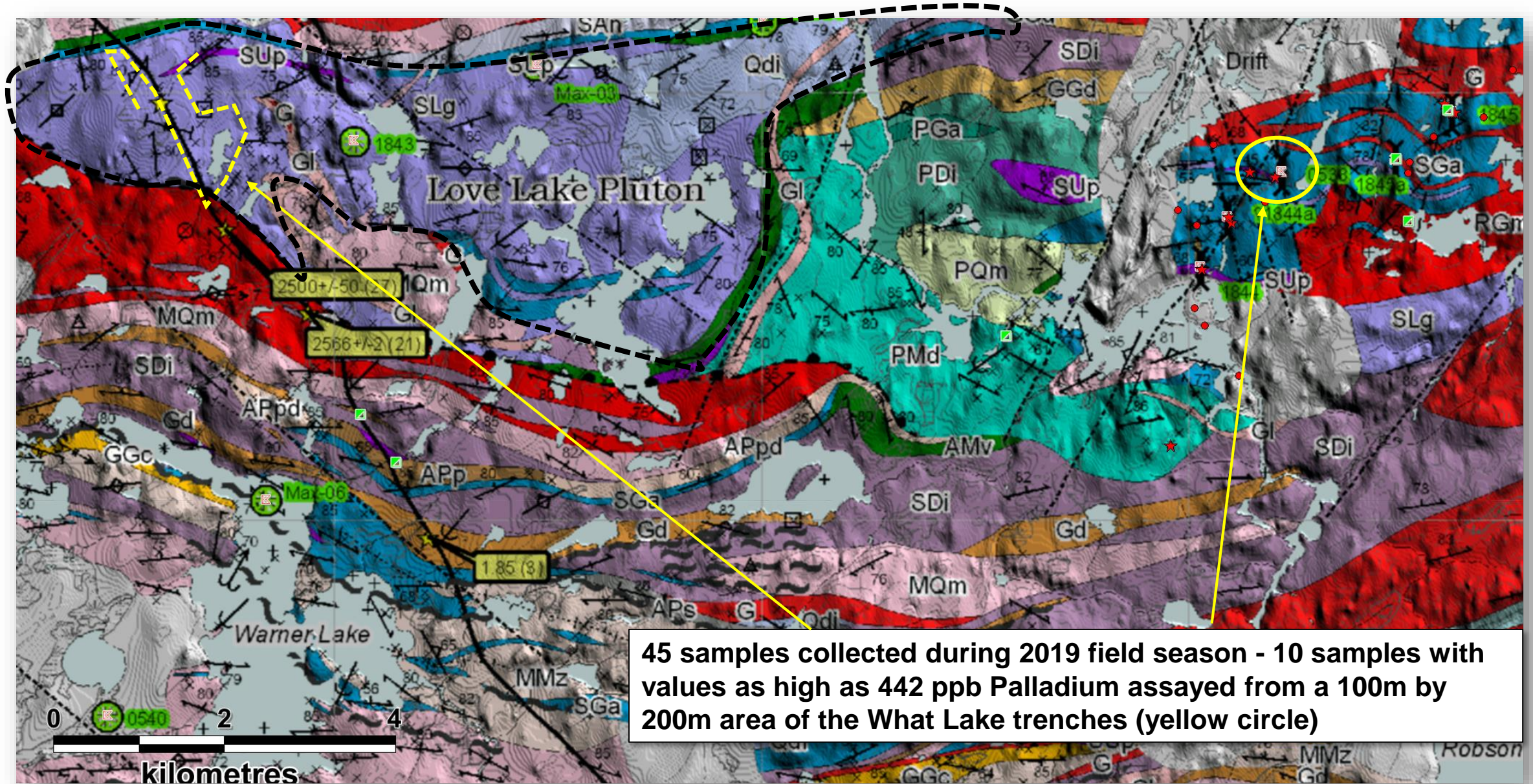


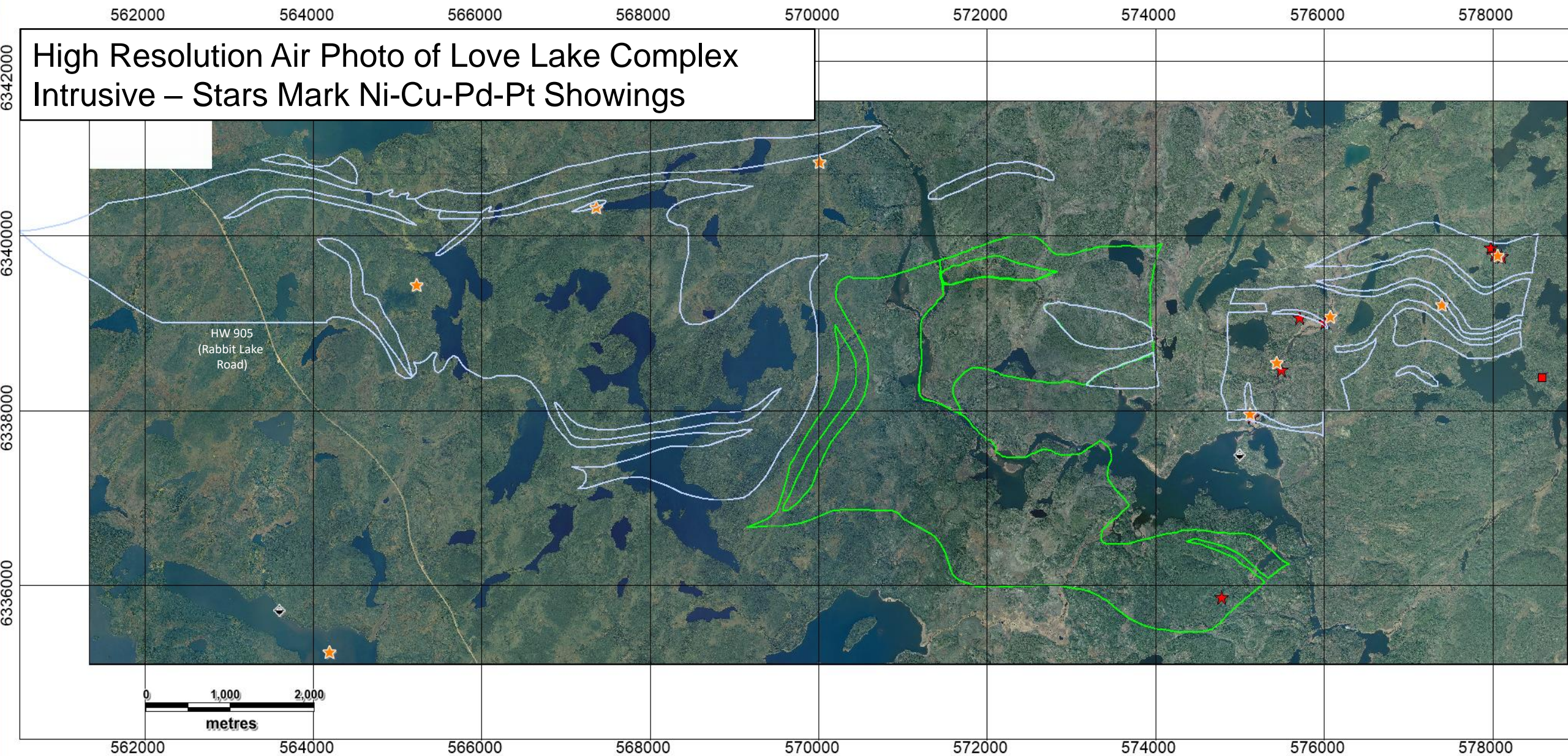


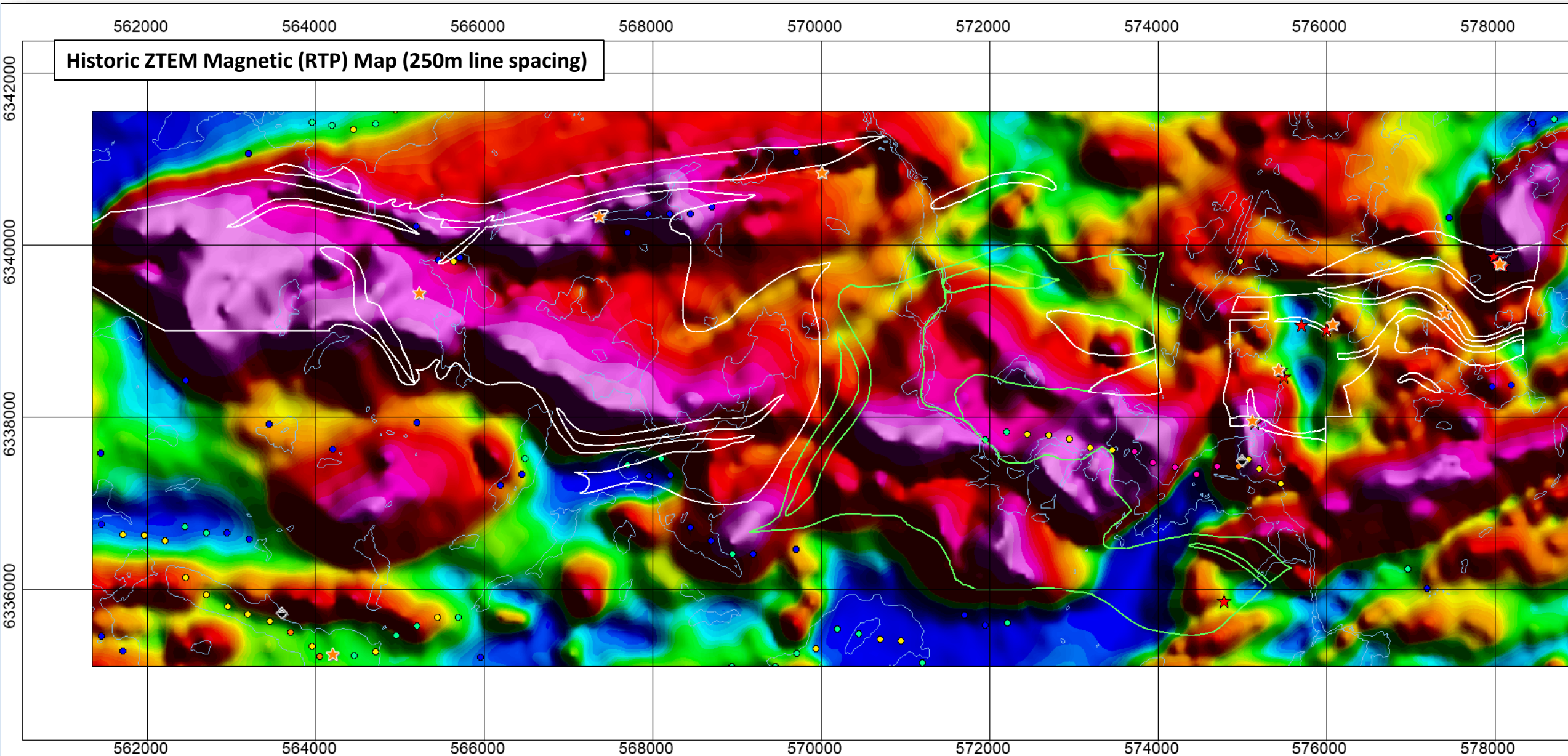
Love Lake intrusive shows layering & brecciation.

Targets PGE's at the intersection of structures, reef-type layers, feeders and lower magma chambers of massive sulphides.











1. Structurally –controlled Palladium (Lac des Iles)
2. Reef style Platinum/Palladium (Bushveld/Stillwater)
3. Massive Nickel/Copper deposits (Voisey's Bay)

Pyrrhotite (Pentlandite), Chalcopyrite, PGM



Mineralization hosted in gabbro containing up to 10% interstitial disseminated sulphides and/or magnetite. Primary pyrite, pyrrhotite, chalcopyrite, magnetite and minor pentlandite locally concentrated throughout the gabbro.

What Lake Sample Results

(5 of 10 grab samples from 100m X 200m)

134 ppb to 442 ppb Palladium

108 ppb to 331 ppb Platinum

20 ppb to 144 ppb Gold

Results for Rhodium pending

47 ppm to 60ppm Scandium

0.06% to 0.37% Copper

0.01% to 0.04% Nickel



Collecting samples at the What Lake trenches



- Breccias common.
- Visible sulphides present in most samples.
- Geochemical analysis and whole rock analysis underway.



Collecting samples along the pluton traverse

Alteration, layering and both ductile and brittle structures were noted.



CONTACT INFORMATION

www.forumenergymetals.com

HEAD OFFICE Suite 615, 800 West Pender St.
Vancouver, British Columbia, Canada
V6C 2V6

RICK MAZUR, PRESIDENT & CEO

T: 604-630-1585

E: mazur@forumenergymetals.com

CANADA CRAIG CHRISTY, VP, CORPORATE DEVELOPMENT

T: 250-863-0561

cchristy@forumenergymetals.com

UK BURNS TENNENT-BHOHI, DIRECTOR

T: 074-0316-3185

burnsstb@forumenergymetals.com